



International Federation of L'Arche Communities | Accessible Version

Mandate 2023-2028

We believe in the transformative power of relationships between people with and without intellectual disabilities. Today, our shared life is more relevant and challenging than ever.

Within and beyond our communities, we are called to nurture fundamental aspects of our life together - community and spiritual life, outreach, and growth.

L'Arche is at a key point in its history. The work of the Study Commission is changing our understanding of our past and it must shape our work going forward. As members of the Federation, we are each called to take responsibility for the mission of L'Arche with greater maturity and accountability.

1. Clarify governance and authority

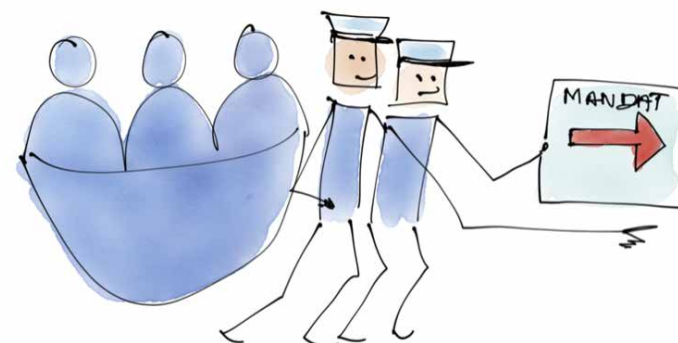
The key priority for this mandate is to become clearer about who holds authority at what level, how leadership is exercised, and how leaders are accountable for the mission. Reviewing and better understanding the Constitution will help achieve this.

Our relationships at L'Arche can change the world.

It is important to take care of our community, our life together and people outside of L'Arche.

We know more about our past after the report on Jean Vanier and Thomas Philippe.

At L'Arche today we need everyone to care for our future.



Saying clearly who does what

We need to know who makes decisions. How are they made? How can we ask questions about these decisions? The L'Arche Constitution can help us.



2. Grow in living and sharing our mission with the world

Engaging with the world around us, in partnership with other organisations, groups and individuals, will lead us into unexpected places and new expressions of L'Arche. Growth is vital and can take many forms such as deepening spirituality, greater competence, outreach, or a new foundation. The voices and contributions of people with disabilities are integral to our engagement in the world.

3. Integrate the Charter

The Charter promotes our core values and practices, and will be a tool to renew our spirituality and community life. Embedding the Charter into our life together will equip us for mission and help align our actions with our ideals.

Growing by sharing L'Arche with other people



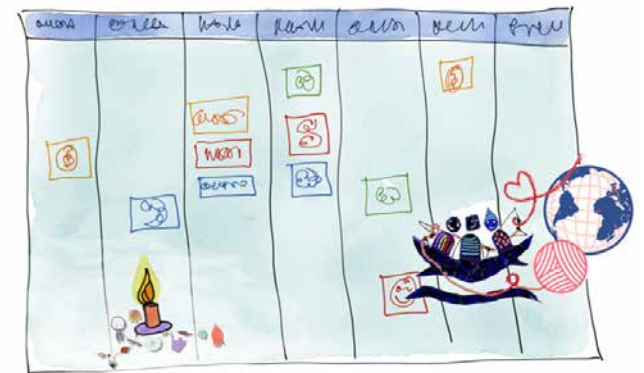
L'Arche can grow by sharing our good ideas and work with other people and other organizations. People with disabilities are integral to this work.



Use the Charter



We will use the Charter to better understand what is important at L'Arche. It will help us do what we really want to do.



4. Collaborate in fundraising

It is essential that we understand the financial realities across the Federation, and build consensus about the role of L'Arche International and individual countries in raising and allocating funds. We will best achieve sustainable resourcing by taking collective responsibility, and integrating fundraising into our mission at all levels.

5. Strengthen the L'Arche network

Nurturing relationships across regions, countries and cultures in L'Arche allows us to share wisdom and good practice, solve problems together, and learn from our mistakes. These connections open us to a wider vision, greater solidarity and awareness of our responsibility for the life of the Federation.

Fundraising together



All of the L'Arche communities in all of the countries need money. We will work together to find the money we need.



Getting to know each other in L'Arche better

We want to get to know other L'Arche communities, near and far. This is a great way to learn new things, to find solutions to problems and also to understand each other better.

